



Thorpelea , Peterlee, SR8 3TW

£290,000

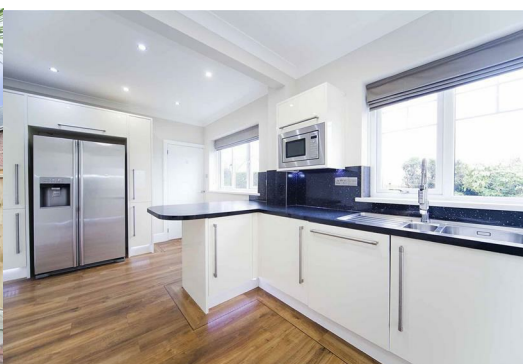


Nestled in the charming area of Easington Village, this stunning four-bedroom detached house presents an exceptional opportunity for those seeking a spacious and modern family home. The property boasts two generous reception rooms, providing ample space for both relaxation and entertaining. The heart of the home is undoubtedly the modern kitchen, which has been thoughtfully designed to cater to contemporary living.

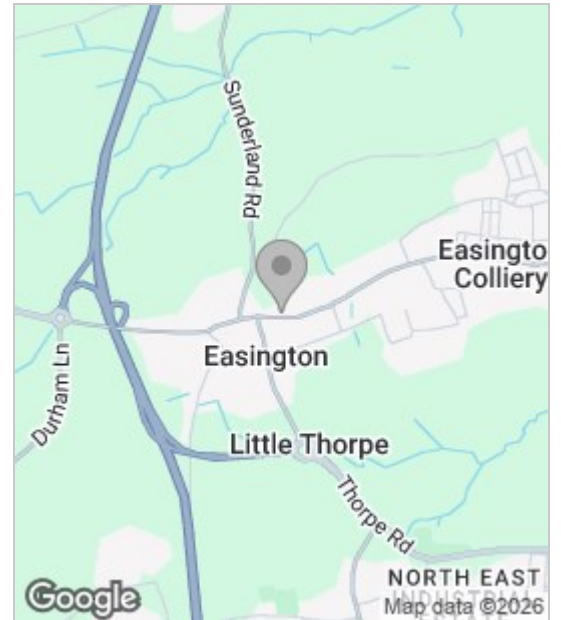
The property features four well-proportioned bedrooms, ensuring that there is plenty of room for family members or guests. With two bathrooms, morning routines will be a breeze, accommodating the needs of a busy household.

One of the standout features of this home is the large driveway, capable of accommodating up to four cars, and enhanced by electric gates for added security and convenience. The converted garage offers additional versatility, whether you choose to use it as a home office, gym, or extra storage space.

The large rear garden is a delightful outdoor space, perfect for children to play, hosting summer barbecues, or simply enjoying the tranquillity of your surroundings.



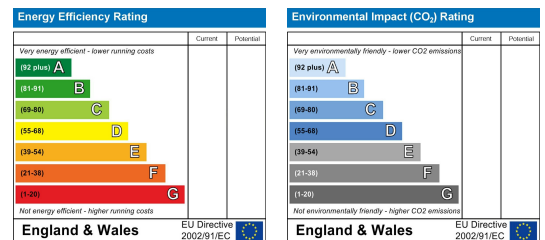
Area Map



Floor Plan



Energy Efficiency Graph



These particulars, whilst believed to be accurate are set out as a general outline only for guidance and do not constitute any part of an offer or contract. Intending purchasers should not rely on them as statements of representation of fact, but must satisfy themselves by inspection or otherwise as to their accuracy. No person in this firm's employment has the authority to make or give any representation or warranty in respect of the property.